



Birmingham – the UK's 2nd City



The image consists of two parts. The top part is a wide aerial photograph of Birmingham, showing the city's skyline with various buildings and a prominent tower. The bottom part is a closer aerial view of the city center, featuring a mix of modern and traditional architecture, including a large stadium with a blue roof and a prominent church spire.

Overview of Birmingham

- Fast Facts
- Notable Areas and Landmarks
- Birmingham as an Investment Choice

Fast Facts



Located in the West Midlands Region of the UK



Around 1 Hour 30 Minutes by Train to London, Manchester, and Liverpool

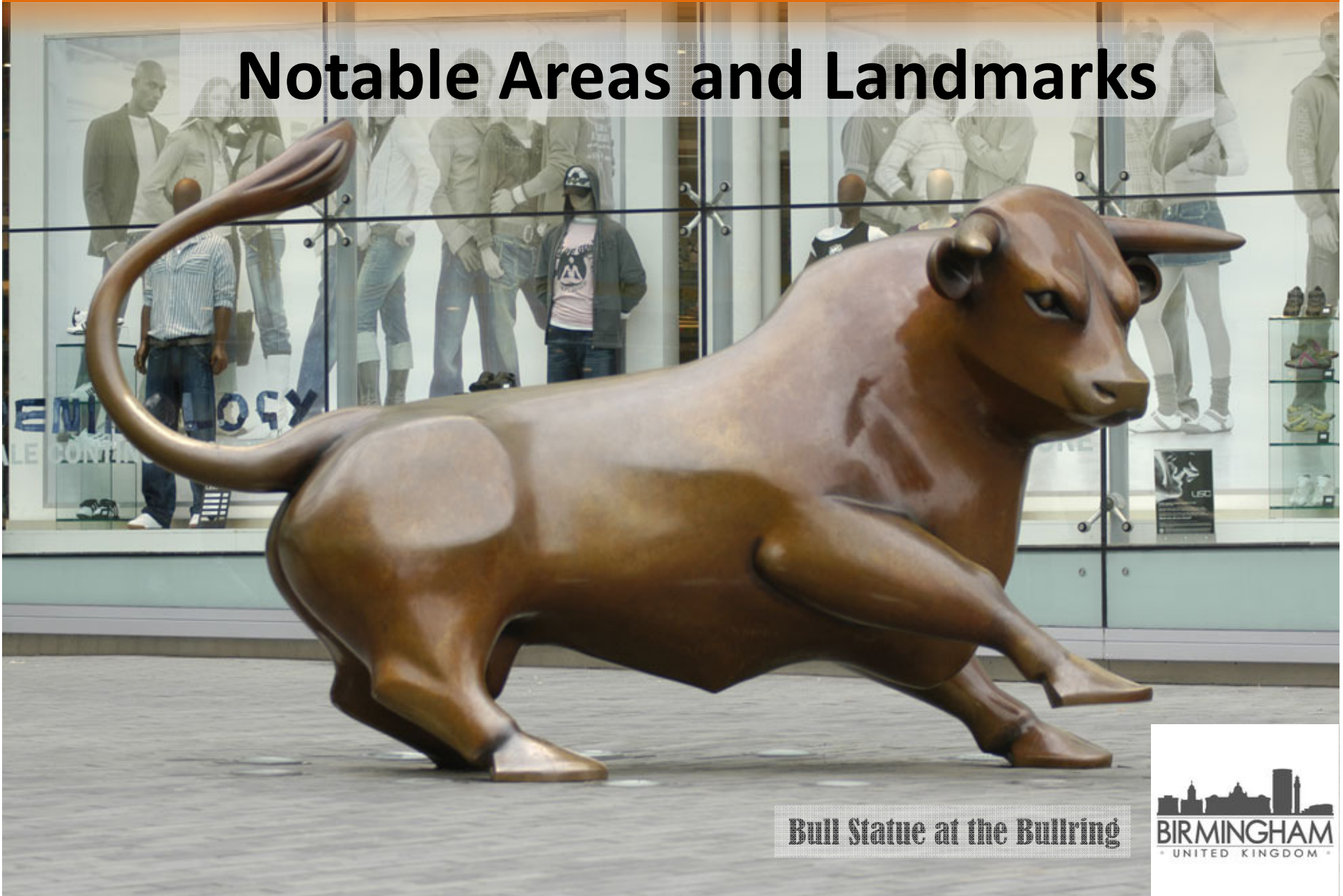


Population – 1.1 Million (2015), 2nd Largest City of the UK



Youngest City in Europe – 40% of population are under 25

Notable Areas and Landmarks



Bull Statue at the Bullring



The Bullring



- ❖ **111,400m² of Retail Space**
- ❖ **Completed in 2003**
- ❖ **Over 200 Shops including:**

BOSS
HUGO BOSS

DEBENHAMS
Life made fabulous

Dr. AirWair
Martens

FOREVER 21

H&M

SELFRIDGES & CO

TED BAKER **MICHAEL KORS** **ZARA**
LONDON

Hippodrome Theatre



❖ **Opened originally in 1895**

❖ **Venue for Renowned West End touring shows such as:**



❖ **Busiest | Most Popular Theatre in the UK, with over 520,000 audiences every year**

Jewellery Quarter



❖ **Dates back more than 250 years**

❖ **Epicenter for Jewellery Design with more than 500 jewellery-related businesses**

❖ **Described as a national Treasure by English Heritage**

❖ **Produces an estimated 40% of the UK's Jewellery**



BT Tower



❖ **Tallest structure in Birmingham City standing at 152m high (31 Floors)**

❖ **Completed in 1965**

❖ **Used initially as a telecom tower to send and receive unblocked signals in the UK**

❖ **Still used today to provide high speed data to areas which do not yet have fibre networks available**

Birmingham New Street Station



❖ **Main Train Station in Birmingham (Serving 80% of trains to Birmingham)**

❖ **Redeveloped in 2015**

❖ **Busiest Train Station in UK outside London (1 train leaving every 37 seconds)**

❖ **42 Million Users between April 2016 – March 2017**

University of Birmingham



❖ **First of 6 original “red brick” universities**

❖ **Consistently Ranked amongst the top 100 Universities globally**

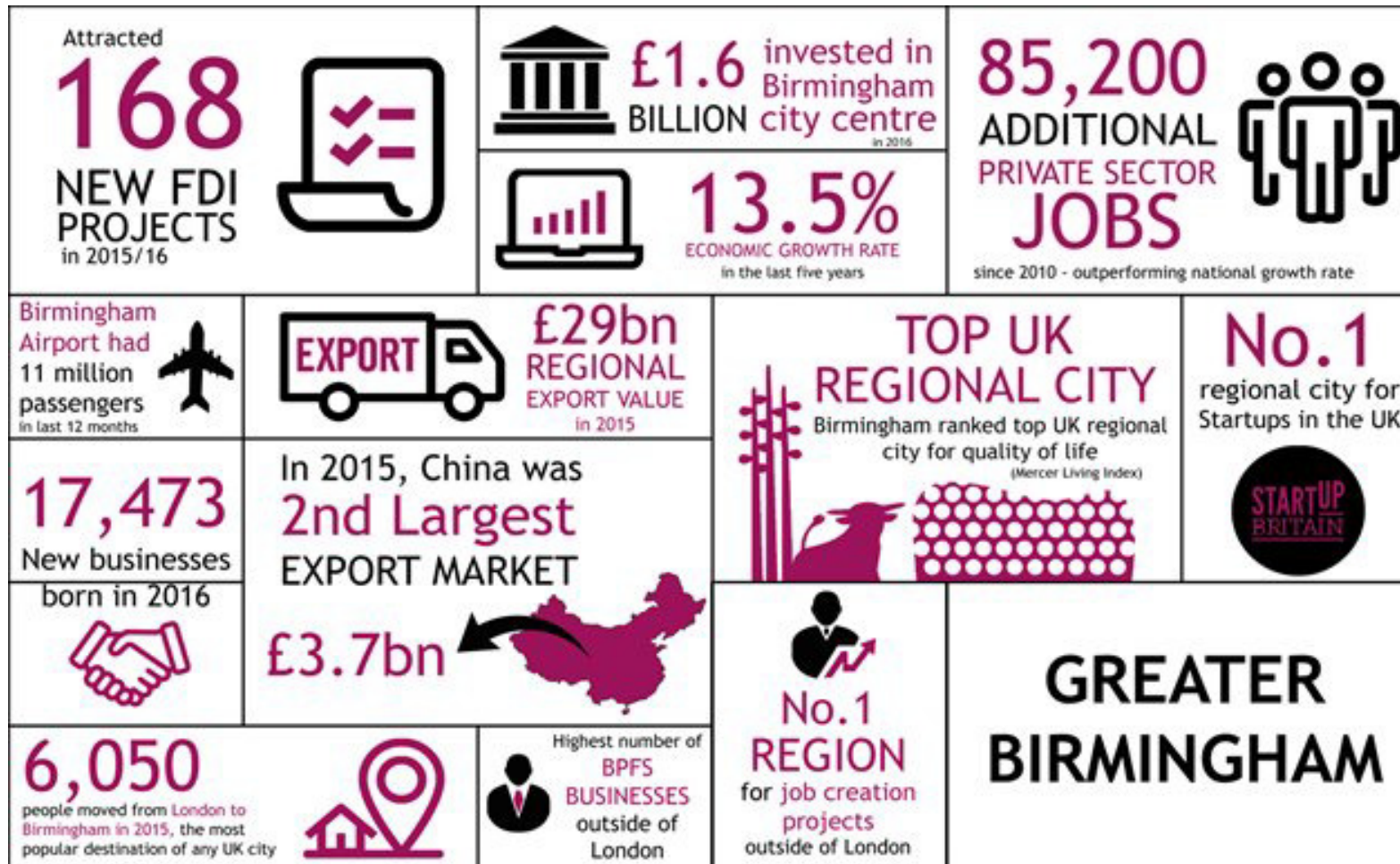
❖ **Host to 5000 Students from 150 countries (2018)**

❖ **87% of research have global impact, and 81% of research are rated as “world leading” or “internationally excellent”**

Birmingham as Your Choice Investment



Birmingham in Numbers



Birmingham Property Trends

secure | landregistry.data.gov.uk/app/ukhpi/browse?from=2013-03-01&location=http%3A%2F%2Flandregistry.data.gov.uk%2Fid%2Fregion

Average price by type of property in Birmingham

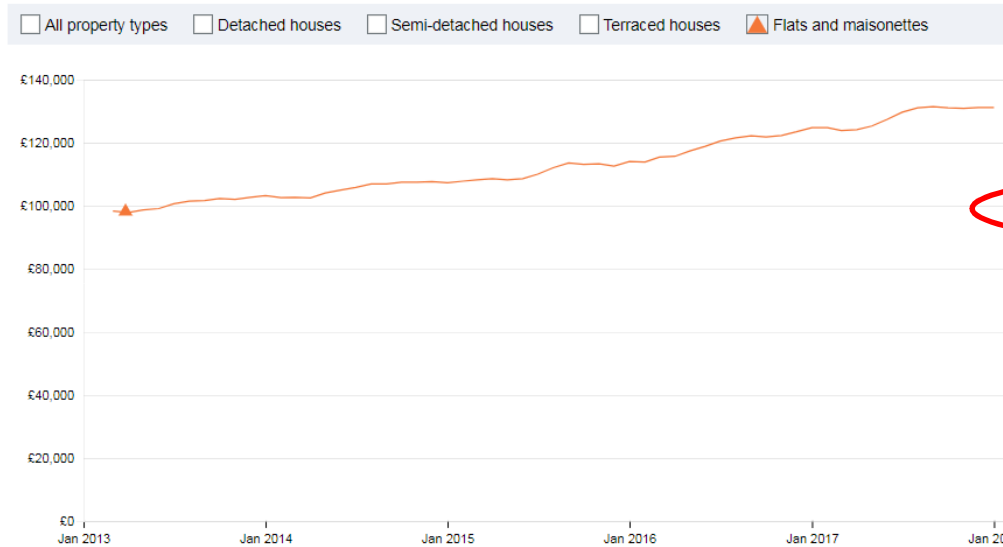


Table 2 - City level summary

City	Current price	%yoy Feb-18	%yoy Feb-17
Edinburgh	£227,300	8.0%	4.4%
Liverpool	£115,700	7.8%	2.7%
Birmingham	£155,600	7.7%	6.2%
Leicester	£171,800	7.7%	6.9%
Manchester	£160,000	7.1%	6.6%

Average Price (2013): GBP 97,962
Average Price (2018): GBP 131,216
Growth Over 5 years: 33.94%

Birmingham Property Trends

rightmove 

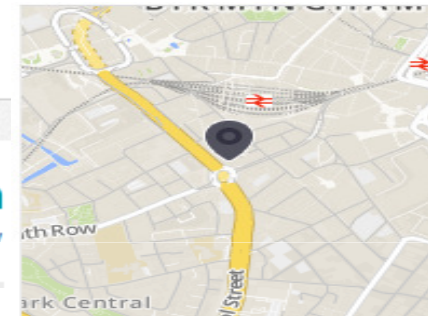
Buy Rent Find Agent House Prices

2 bedroom apartment to rent

10 Holloway Circus, Birmingham, B1 1BT

£1,300 pcm

fees apply

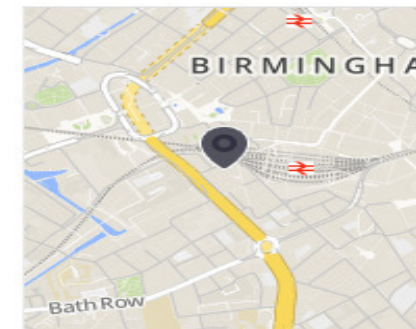


2 bedroom apartment to rent

Navigation Street, Birmingham

£1,150 pcm

fees apply



Birmingham Property Trends

BirminghamLive

NEWS ▾ IN YOUR AREA VILLA BIRMINGHAM CITY WHAT'S ON ▾ WHO WE ARE MORE ▾



B News ▸ Midlands News ▸ Birmingham

Revealed: The true extent of the Birmingham housing crisis

According to the latest official figures, just 780 homes were built in the city in 2016



SHARE



COMMENTS

By [Annie Gouk](#) & [James Rodger](#) Advanced Content Writer
22:23, 26 FEB 2017 | **UPDATED** 22:25, 26 FEB 2017

NEWS

Birmingham's population is growing FIVE TIMES faster than homes are being built, new analysis reveals.

Stagnating levels of house-building in the city combined with a surging population is likely to mean the current housing crisis will only get worse over the next few years.

According to the latest official figures, just 780 homes were built in the city in 2016, bringing the total number of dwellings (houses and flats) to around 430,000.

That translates to a growth in Birmingham housing of just 0.18 per cent between 2015 and 2016.

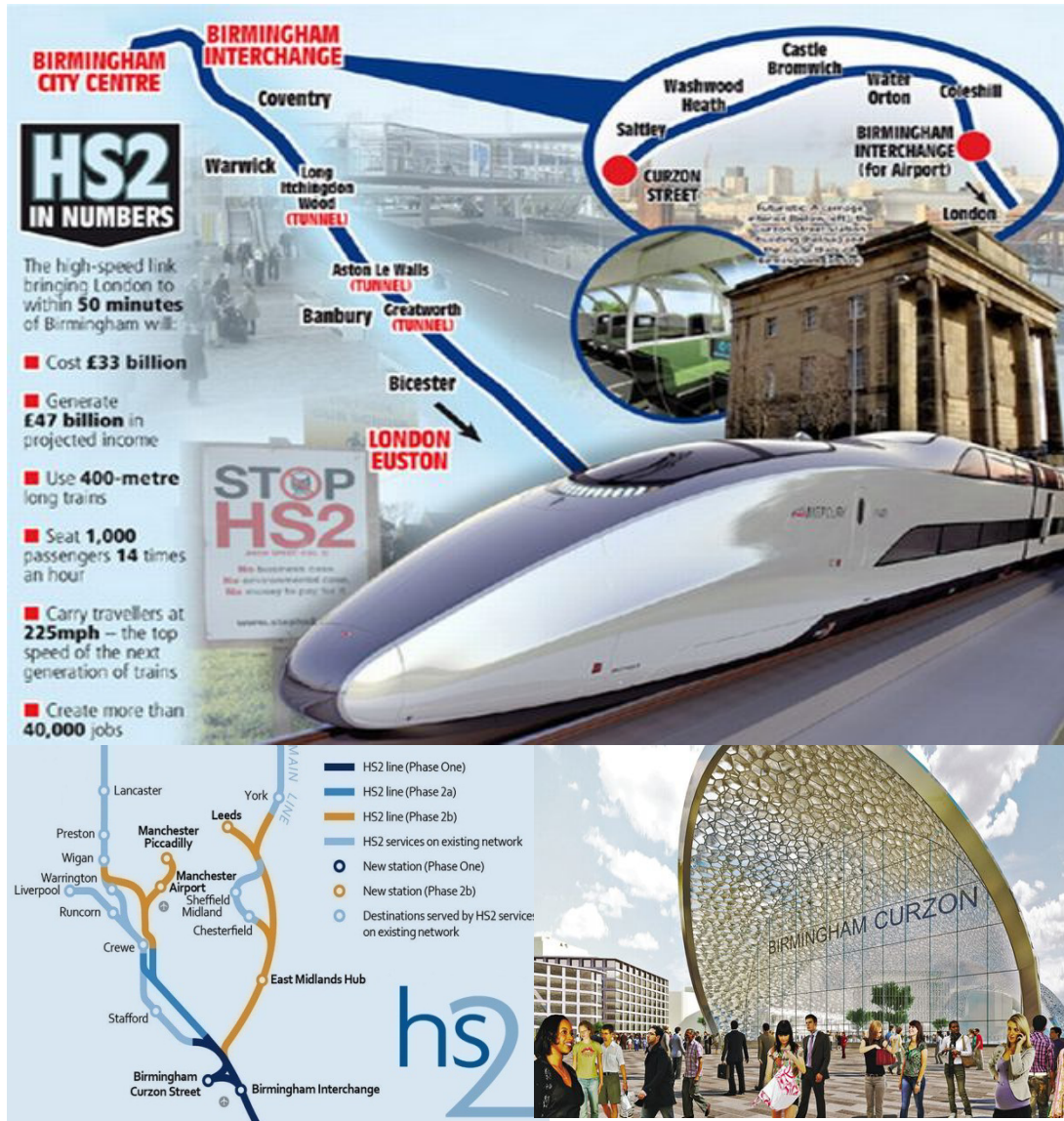
In comparison, the population of the city grew by nearly 10,000 people between mid-2014 and mid-2015 - the latest data available.



Significant Developments



HS2 Train Service



❖ **Target Completion: Dec 2026**

❖ **Birmingham to London in 49 Minutes (compared to current journey of 90 minutes)**

❖ **Gateway to Manchester, Liverpool, and Leeds**



Axis Square Development

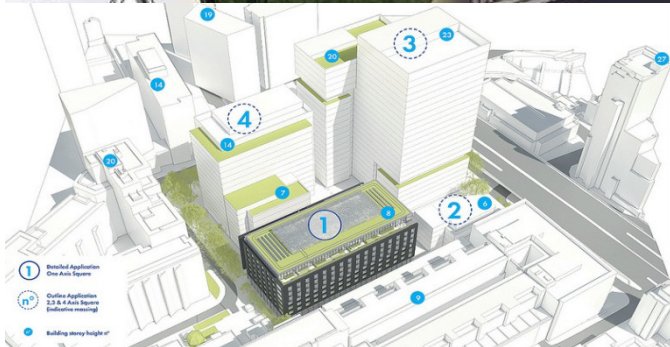


❖ **4 Commercial office Buildings – 5 to 23 Storeys**

❖ **One Million Square Feet of new Grade A offices**

❖ **Ground Floor Retail, Restaurants, and cafes**

❖ **Vibrant public Square**



Paradise Birmingham



❖ **Largest development in Birmingham**

❖ **1.8 Million Sq. ft mixed-used development**

❖ **4-star Hotel with 250 rooms**

❖ **Grade A Offices**

❖ **Retail & Leisure**

❖ **Targeted completion of all 3 phases Q2 2025**



PHASE ONE

- 1. One Chamberlain Square**
172,000 sq ft
- Unit A: 6,028 sq ft
- Unit B: 5,866 sq ft
- Unit C: 4,499 sq ft
- Unit D: 3,789 sq ft
- 2. Two Chamberlain Square**
183,000 sq ft
- Upper Ground
- Unit A: 4,065 sq ft
- Unit B: 2,780 sq ft
- Unit C: 3,350 sq ft
- Ground
- Unit D: 3,390 sq ft
- Unit E: 2,748 sq ft

PHASE TWO

- 3. Three Chamberlain Square**
100,000 sq ft - 140,000 sq ft
- 4. One Centenary Way**
190,000 sq ft - 265,000 sq ft
- 5. Hotel: One Ratcliffe Square**
4* 250 bedroom

PHASE THREE

- 6. Two Congreve Square**
150,000 sq ft - 250,000 sq ft
- 7. Three Congreve Square**
120,000 sq ft - 175,000 sq ft
- 8. Pavilion, Centenary Way**
1,500 sq ft - 3,100 sq ft
- 9. Two Centenary Way**
90,000 sq ft - 105,000 sq ft
- 10. One Congreve Square**
100,000 sq ft - 165,000 sq ft

Birmingham Metro Extensions



❖ **£1.3 Bn investment to expand West Midlands Tram System**

❖ **Expansion to be done over 10 years**

❖ **Trams to service each station every 6 mins**

❖ **Better connectivity within Birmingham City**



Thank You

This document has been prepared by DWG for advertising and general information only. DWG does not guarantee, warrant or represent that the information contained in this document is correct. Any interested party should undertake their own inquiries as to the accuracy of the information. DWG excludes unequivocally all inferred or implied terms, conditions and warranties arising out of this document and excludes all liability for loss and damages arising therefrom. Purchasers are advised to conduct their own due diligence and are informed that, as in any investment, commercial risks are involved. • All forms of investment carry risks, including the risk of losing all the invested amount. Such activities may not be suitable for everyone. Investors are advised to do the necessary checks and research on the investment beforehand. • The government of the property stated herein imposes certain restrictions on foreign ownership of properties. Buyers will need to fulfil the requisite criteria before being able to purchase foreign properties. DWG owns the advertised foreign properties/ co-invests together with Developers as Joint Venture partners.

